



SAMPLE

Conquesta 2014

(International Multiple Choice Primary School Olympiads – Est. 1998)

Conquesta, P O Box 99, Kloof, 3640, South Africa

Tel: (031) 764-1972 * Fax: (086) 637-7808 or (031) 764-0074

E-mail address: conquest@iafrica.com * Website: www.conquestaolympiads.com



Natural Science and Technology – Grade 4

Welcome to your Conquesta Olympiad. When you have decided which of the answers is correct, scratch out the letter in the matching square on your answer sheet using **ONLY a black or blue ballpoint or black khoki pen.** (Do not use pencils, crayons, pencil crayons, highlighters, tippex or glue.) If the answer to question 4 is c, then scratch out the letter c in the square containing c next to the number 4 (see example 1 below). If you've made a mistake and b should have been the answer, neatly cross out the mistake and then scratch out b (see example 2 below).

Example 1:-

4.	a	b	<input checked="" type="checkbox"/>	d
----	---	---	-------------------------------------	---

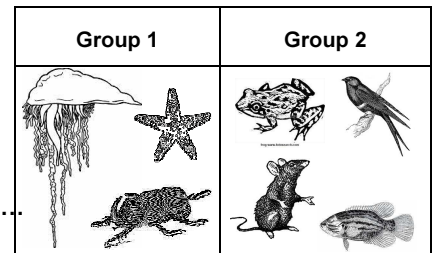
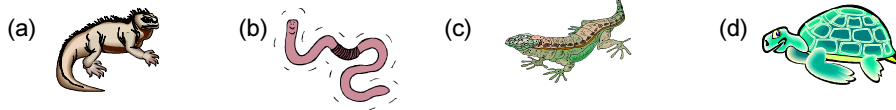
Example 2:-

4.	a	<input checked="" type="checkbox"/>	<input checked="" type="checkbox"/>	d
----	---	-------------------------------------	-------------------------------------	---

1. Which two life processes occur in both plants and humans?
 (a) Growing and reproducing. (b) Germinating and making food.
 (c) Growing and making food. (d) Germinating and reproducing.

Look at the picture on the right.

2. Choose which animal in (a) – (d) belongs to Group 1.



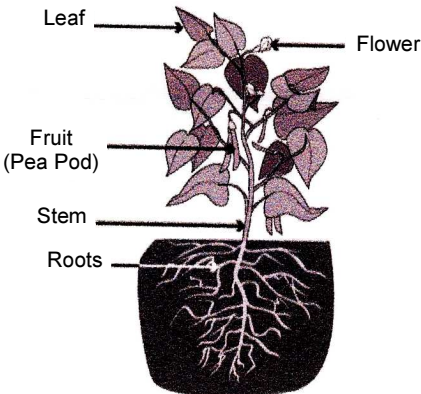
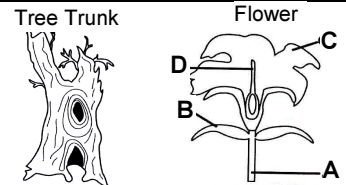
3. The fish, mouse and bird are alike in many ways. One way is that they all have
 (a) legs. (b) hair. (c) backbones. (d) lungs.

4. Which is most similar to the skin of a human?
 (a) Beak of a bird. (b) Scales of a fish. (c) Gills of a tadpole. (d) Teeth of a crocodile.

5. Which of these provides organisms with all of their basic life needs?
 (a) soil (b) water (c) habitat (d) consumers

6. Look at the picture on the right and choose what part of the flower marked A – D is similar in use to the tree trunk.

- (a) part A (b) part B
 (c) part C (d) part D



There are over 265 000 known species of plants on Earth. These plants are divided into groups based on their characteristics. The picture on the left is of a pea plant which belongs to a group of plants called seed plants.

7. Which one of these is required in order for seeds to germinate?
 (a) soil (b) light (c) water (d) oxygen
8. Plants produce their own food. In which part of the plant is most of its food produced?
 (a) leaf (b) fruit (c) stem (d) root
9. The largest group of plants in the world is seed plants. The structure in seed plants that function to produce food for the plant is the
 (a) flower. (b) stem. (c) seed. (d) leaf.
10. Green plants make their own food using the energy from the
 (a) sun. (b) soil. (c) air. (d) water.

11. Green plants make their own food, so they are called
 (a) producers. (b) germinators.
 (c) decomposers. (d) organic.
12. Which example describes an organism taking in nutrients?
 (a) A dog burying a bone. (b) A girl eating an apple.
 (c) An insect crawling on a leaf. (d) A boy planting tomatoes in a garden.
13. A soil sample contains living and non-living materials. Which one of these materials was once living?
 (a) Sand particles. (b) Decomposing leaves. (c) Small pebbles. (d) Water droplets.

14. Which of these is a natural resource?
 (a) cloth (b) paper (c) soil (d) bricks

15. The products listed on the right come from the same type of source. This source is
 (a) water. (b) plants. (c) rocks. (d) animals.

Products
 Paper
 Cotton
 Sugar

