

Conquesta 2008

(International Multiple Choice Primary School Olympiads – Est. 1998)

Conquesta, P O Box 99, Kloof, 3640, South Africa

Tel: (031) 764-1972 * Fax: (086) 637-7808 or (031) 764-0074

E-mail address: conquest@iafrica.com * Website: www.conquestaolympiads.com



Natural Sciences – Grade 6

Welcome to your Conquesta Olympiad. As you read and answer the questions, we hope that you enjoy and learn from the information. Once you have read the information and the questions carefully, you have to make a choice. When you have decided which of the answers is correct, completely fill in the matching square on your answer sheet using a 2B or a B pencil. For example, if the answer to question 4 is c, then neatly fill in the square containing c next to the number 4. See example below. Fill in only one square per question and make sure you completely rub out any mistakes so that the answer is clear.

Example:-

4.	a	b		d
----	---	---	--	---

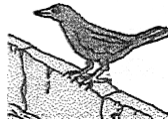
Animals live by eating plants or each other.

Match the creatures in questions 1-4 with what they eat in (a) – (d).

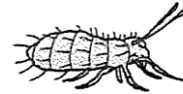
1. Bacteria



2. Blackbird



(a) Greenfly



(b) Bacteria



3. Protozoa



4. Ladybird



(c) Snail



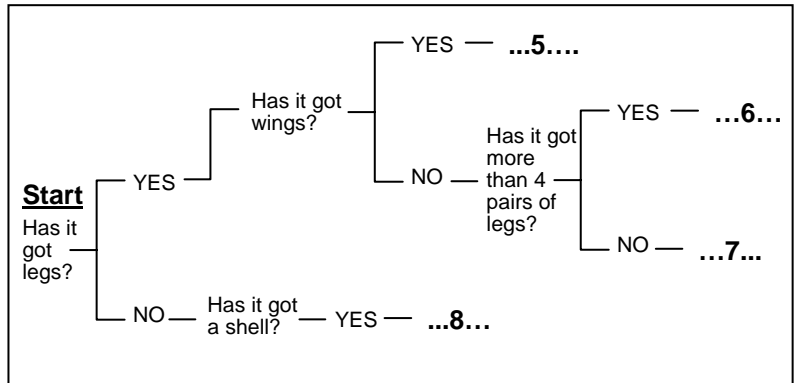
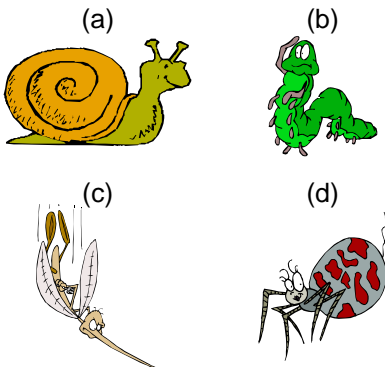
(d) People



Identifying

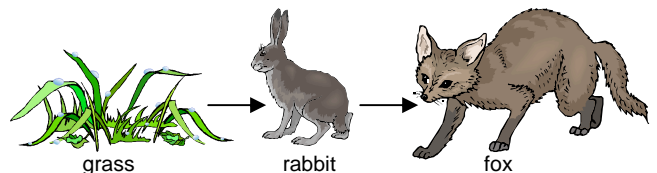
To help people identify living things we can use keys. Keys are a series of questions that have two possible answers. Eventually the questions divide the group until there is only one option. The option left will be the identification of the plant or animal.

Place the creatures in (a) – (d) into the missing spaces for questions 5-8 in the diagram below.



Food Chains And Webs

- Food chains and webs begin with energy from the Sun.
- A food chain shows us what eats what in a community.
- A food web is made up of interconnected food chains.



9. All the living and nonliving things in an area that interact with each other are part of

- (a) a habitat. (b) a community.
(c) a niche. (d) an ecosystem.

10. Most lakes, streams, rivers and ponds are referred to as

- (a) saltwater ecosystems. (b) freshwater ecosystems.
(c) marine systems. (d) biomes.

11. A living thing that is hunted for food is

- (a) a predator. (b) a decomposer.
(c) prey. (d) a consumer.

12. The diagram on the right shows a simple food web.

Which animal is classified as an omnivore?

- (a) red fox
(b) deer
(c) black bear
(d) rabbit

